

**LED SOLAR LIGHT
CATALOGUE 2021-2022**
Light up your future

SB Lighting Group Company Profile

Members of SB Lighting Group

- Speedy Best Sdn Bhd
- Max Led Display Technologies (M) Sdn Bhd
- Perfect Poles Sdn Bhd
- SBC Lighting Sdn Bhd
- Puncak Setia Harmoni Sdn Bhd

Company Background :-

SB Lighting Group consist of 5 companies which manufacture & distribute lighting product such as :-

- **Speedy Best Sdn Bhd** : Incorporated in 1995 as the Manufacturer of Street lantern and Decorative lightings. ISO 9001:2015
- **Max Led Display Technologies (M) Sdn Bhd** : Incorporated as the Manufacturer of Traffic light and LED display & LED Signage products.
- **Perfect Poles Sdn Bhd** : Affiliate company established to Manufacture street lighting column and steel engineering works.
 - **SBC Lighting Sdn Bhd** : Established to OEM Sylvania lights in Malaysia. In future it served as a regional manufacturing hub export to South East Asia Countries such as Thailand, Indonesia, Singapore, Philipines and Vietnam. ISO 9001: 2015
- **Puncak Setia Harmoni Sdn Bhd** : Master Distributor of SYLVANIA Outdoor and Street Lantern in Malaysia. Appointment since 2019 to market and promote SYLVANIA products in Malayia.

In 2018, SBC Lighting & Puncak Setia Harmoni Sdn Bhd started working with Feilo Sylvania Malaysia and in early 2019, Puncak was appointed as the Master Distributor of SLYVANIA outdoor & street lighting products in Malaysia market. SYLVANIA Lighting is one of the world's Top Lighting company, headquarter in Budapest, Hungary, a full spectrum Lighting company founded in 1901 with an annual turnover size of EUR 400Million with manufacturing bases, logistics centers, R&D technology centers around the world & market access in over 60 countries.

Company Paticulars :-

- Date Incorporated : From 6th February, 1995
- Status of Company : Manufacturing & trading of lightings and electrical products
- Tel No : 03 - 32903175 / 03-32903176 / 03-32904092 / 03-33234890 / 03-33234743
- Email Address : siang@speedybest.com; puncaksh@hotmail.com
- Company Secretary : Vbriht Secretarial Services
No. 19A, Lebuh Bangau, Taman Berkeley, 41150 Klang, Selangor Darul Ehsan.
Tel : +603-33243936
- Company Bankers : Hong Leong Bank, Public Bank, Ambank, OCBC Bank
- Factory Address : No.15 Jalan SKI 4/KU7, Kawasan Industri Hi Tech, Sungai Kapar Indah,42200 Kapar, Selangor Darul Ehsan, Malaysia.
- Pole Factory Address : Block C, Lot 2592, Jalan Seruling 59, Kawasan 3, Taman Klang Jaya, 41200 Klang, Selangor Darul Ehsan



SB Group Manufacturing Plant

Members of SB Lighting Group



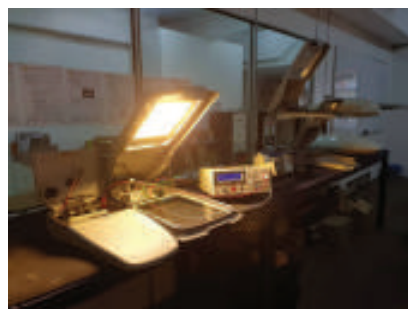
NEW FACTORY IN SERI ALAM INDUSTRIAL PARK, KLANG

Speedy Best Sdn Bhd
 Max Led Display Technologies (M) Sdn Bhd
 SBC Lighting Sdn Bhd
 Puncak Setia Harmoni Sdn Bhd

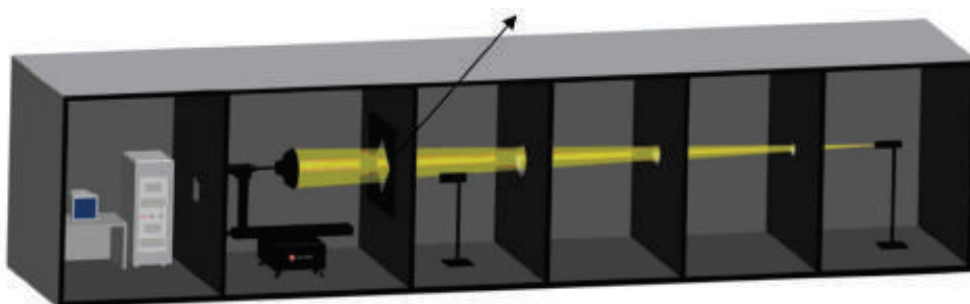
- New 48,000 sqft manufacturing plant for Commercial and LED street lighting
- Integrated Manufacturing plant and showroom
- New Integrated HQ for SB Lighting Group
- Main Showroom for SYLVANIA Lighting products
- Produce & Assemble LED Decorative lights, LED street lights and other lightings
- QC Control, Testing Equipment for LED lightings
- Goniophotometer for Performance test & Light Designing
- IP Test Facilities
- Manufacturing capacity : Able to produce up to 300 Street Lantern daily
- Manufacture in compliance to ISO 9001 : 2015



Production Room



QC & Testing Room



Full View for High Precision Rotation Luminaire Goniophotometer



Water Protection Test

SB Group Manufacturing Plant

Members of SB Lighting Group



Pole Factory In Klang Jaya

Perfect Poles Sdn Bhd

- Manufacture HDG / Decorative Pole
- Steelwork Fabrication
- 25,000 sqft
- Fabrication of Steel Poles, Decorative Poles, Telecom Pole, High Mast and Other Steel Engineering
- Storage for Raw Material and completed steelwork
- Manufacturing capacity : Able to produce up to 100 steel poles daily



9m Press Machine



Shearing Machine



4m Press Machine



Auto Welding Machine Welding & Production

SOLAR INTERGRATED (VSL-002)

ALL IN ONE LED STREET LIGHT (JKR SPEC)

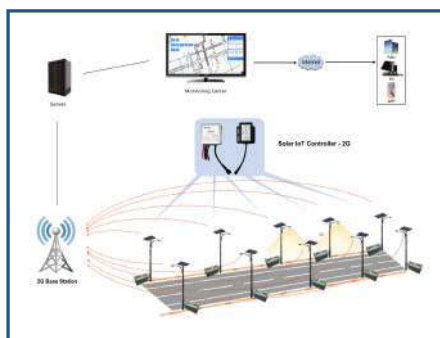
Volux Integrated All in One LED street light simplify Sun Power and Energy Efficient LED into a single easy to install and maintain all in one solar street light. Design to meet JKR Specification with 100% (4 hours), 60% (2 hours) and 40% (6 hours) with 2 days battery autonomy at 80% D.O.D. Volux All in one solar street light can also work with GSM smart controller to connect thru IOT Internet for energy and smart monitoring purpose.

ALL IN ONE SOLAR

Picture Reference



LED TYPE	Lamp Power (Typical Power)	60w	80w	120w
	Efficiency	150 - 170lm/w		
	Size	1490x420x44mm		1490x735x44mm
	CCT	3000-6500K (3500k standard JKR Spec)		
	CRI	>70		
LiFePO4 Lithium Battery	Capacity	25.6V 45Ah (1152W)	25.6V 60Ah (1536W)	25.6V 104Ah (2662W)
	System Voltage	25.6V		
	Working Temperature	-10 to 60 Degree Celsius		
Controller	Charge Time	MPPT charging, 4.5 hours Peak Hours (JKR Spec)		
	Lighting	Whole night (12 hours) with up to 2 days Autonomy (80% D.O.D)		
	Mode	Time Control / Light Dimming Control / MW Sensor control		
Solar Panel	Power	150w	210w	
	System Voltage	24V		
	Efficiency	>19%		
Microwave Sensor	Optional			
Material of casing	Aluminium Alloy			
Smart Control	Optional			
IP ratings	IP66			
Recommended height	6 - 8m	7 - 9m	9 - 12m	
Warranty	5 Years			



Real Time Monitoring the system can send various information of the solar facilities in time, such as voltage, current, energy level, lighting rate, fault, current task and other information.

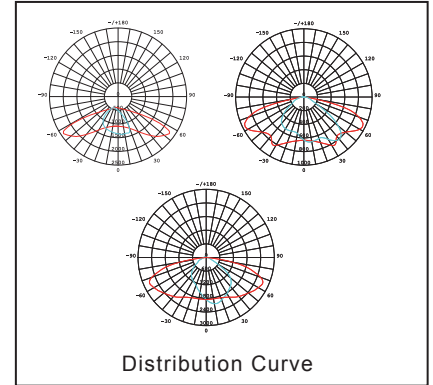
Controllable Lighting Time Operators can change lighting plan of different seasons through the remote platform without the need to go on site

Dimming Plan Operators can use the solar data gained from IOT platform to set the new dimming schedule to make sure the system is operating at the optimum level when needed. Then dimming can be set remotely without the need to go on site.

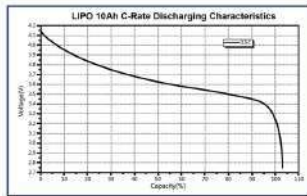
SOLAR INTERGRATED ALL IN ONE LED STREET LIGHT

Solar intergrated street light Operation Instruction

INTERGRATED SOLAR STREET LIGHT VSL-002



The lamp was integrated of led source, lithium battery lighting system and solar panel as one unit.



Lithium battery performance graph

Induction mode

Light control + time control + microwave / infrared(5-10m)

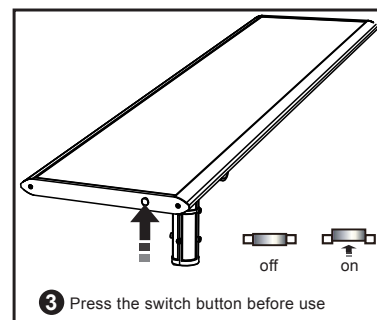
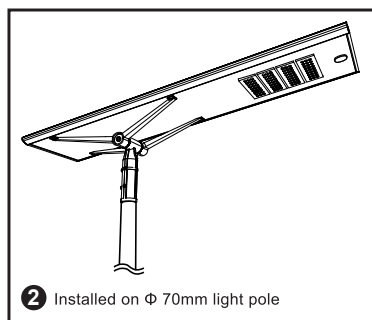
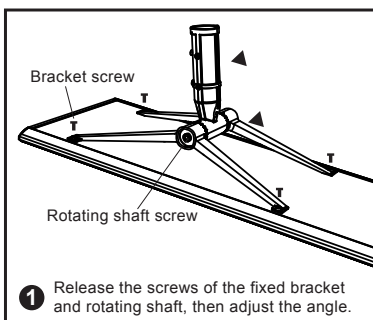


Precautions

1. It's prohibited to use or store the product under a high temperature above 60°C Environment
2. It's strictly prohibited to take the lithium battery system by buses, aircraft.
3. It's strictly prohibited to take the products with flammable, explosive dangerous goods together in the same car .
4. No heavy weight (force) impacting or extrusion .
5. No disassembling the hull of the control system or using the broken lithium battery system
6. It 's prohibited to put the products in fire , water or thrown away.
7. It would be in normal working mode after 2 days' charging and discharging.
8. It is strictly prohibited to put battery in residential areas. It must be put in separate warehouse or explosion-proof box.

Application quarters,courtyard roads, etc.
Mainly used in rural roads, secondary roads, factories, schools, gardens, various residential

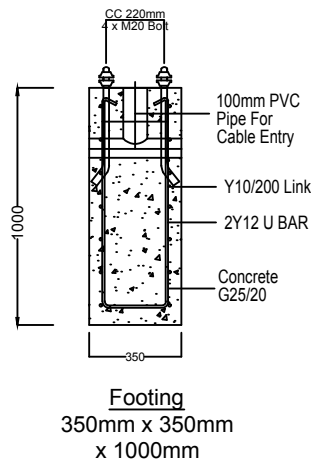
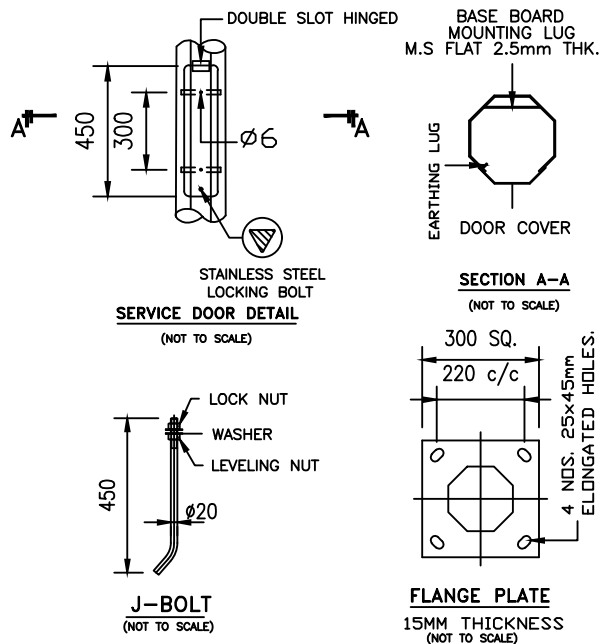
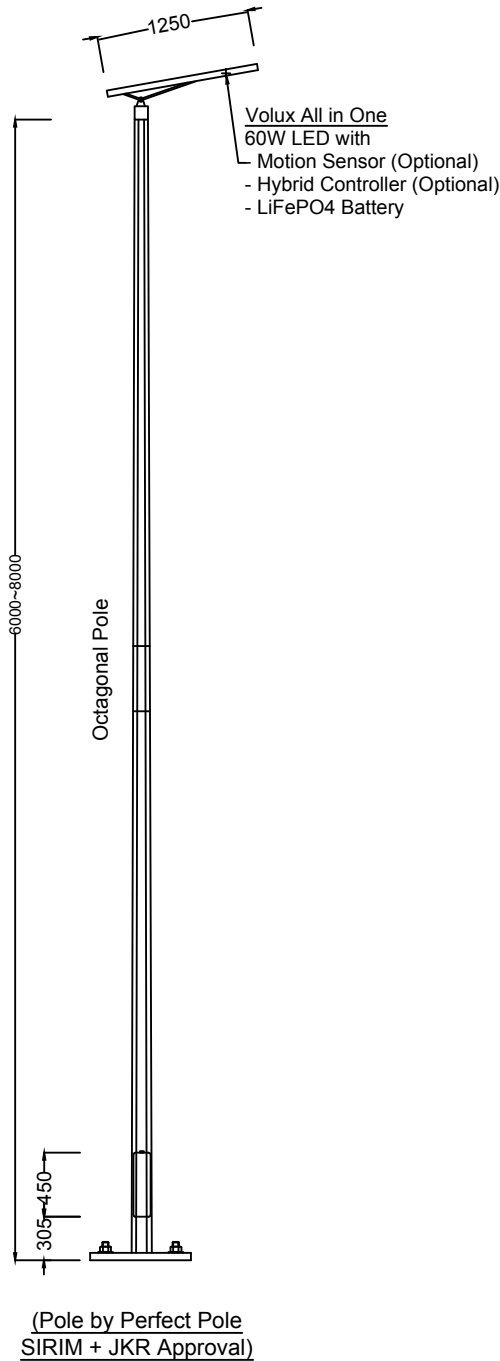
Installation Instruction



SOLAR INTERGRATED ALL IN ONE LED STREET LIGHT



LED Solar All in one SBC VLSL-002



TECHNICAL SPECIFICATIONS

THE DESIGN OF LIGHTING ARE DYNAMICALLY PROVED AND VERIFIED BY USING (FINITE ELEMENT ANALYSIS) DESIGN TO WITHSTAND WIND SPEED OF 35M PER SECOND, TOPOGRAPHY, GROUND ROUGHNESS AND STATICAL FACTOR OF 1.0

LIGHTING COLUMNS ARE COMPLIANCE TO THE BRITISH COLUMNS SPECIFICATION BS 5649

MATERIAL USED FOR LIGHTING COLUMNS ARE COMPLIANCE BS 4360 GRADE 43A/BS 1387

WELDING PROCESS CONFORM TO BS 5135

COLUMNS ARE ANTI-CORRODED BY HOT-DIP GALVANIZED COMPLIANCE TO GALVANIZING STANDARD BS 729

SERVICE DOOR DIMENSION ARE GIVEN AS A GUIDE ONLY. THE ENGINEER MUST SATISFY HIMSELF THAT DIMENSION IS ADEQUATE FOR THE INSTALLATION THE REQUIRED CONTROL

FINISHING : POWDER COATED STANDARD RAL COLOUR AVAILABLE



SBC LIGHTING SDN BHD.
TEL : 03-32903175 / 76
FAX : 03-32903173
EMAIL : siang@speedybest.com

Title DWG :
**6M ~ 8M Octagonal Pole C/W
SBC VLSL-002 All in One Solar**

Client :
Project :

QUANTITY : N/A
SCALE : N.TS
DRAWN BY :
CHECK BY : SIANG

REV	DATE	DESCRIPTION	BY	CHECK	APPD

PROJECTION

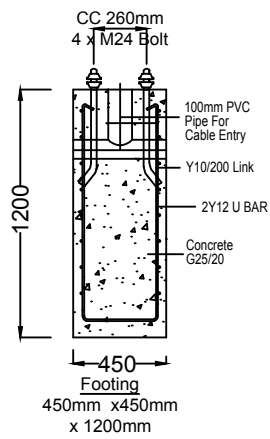
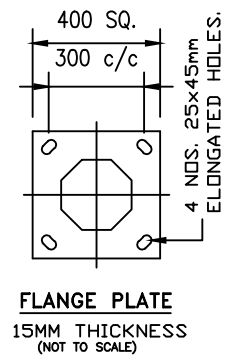
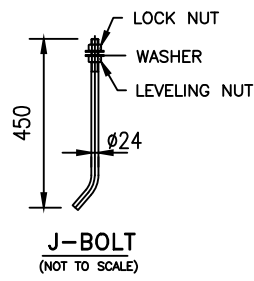
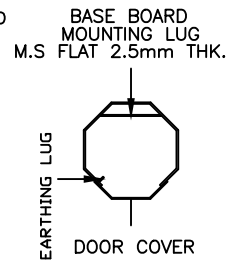
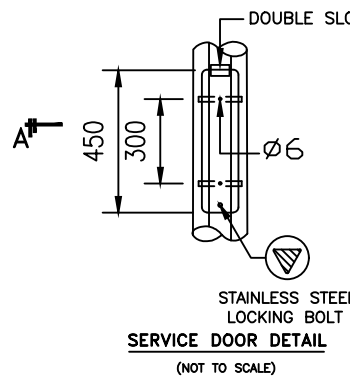
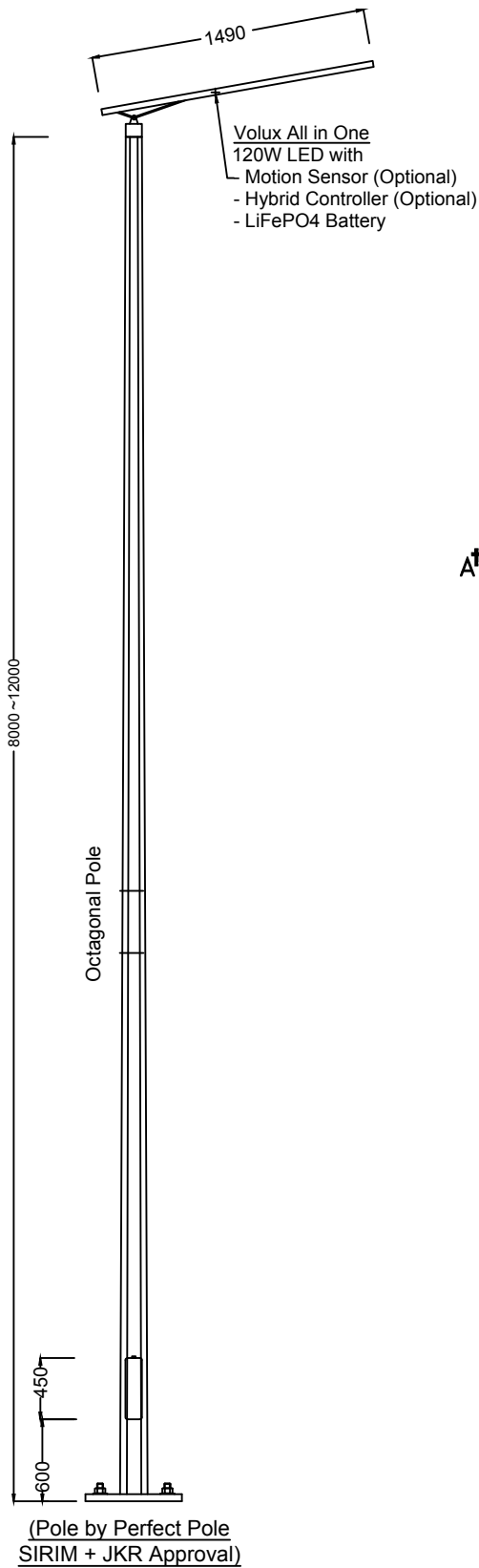
THIS DRAWING IS THE PROPERTY OF
SBC SDN BHD

SOLAR INTERGRATED ALL IN ONE LED STREET LIGHT

ALL IN ONE SOLAR



LED Solar All in one SBC VLSL-002



TECHNICAL SPECIFICATIONS

THE DESIGN OF LIGHTING ARE DYNAMICALLY PROVED AND VERIFIED BY USING (FINITE ELEMENT ANALYSIS) DESIGN TO WITHSTAND WIND SPEED OF 35M PER SECOND, TOPOGRAPHY, GROUND ROUGHNESS AND STATICAL FACTOR OF 1.0

LIGHTING COLUMNS ARE COMPLIANCE TO THE BRITISH COLUMNS SPECIFICATION BS 5649

MATERIAL USED FOR LIGHTING COLUMNS ARE COMPLIANCE BS 4360 GRADE 43A/BS 1387

WELDING PROCESS CONFORM TO BS 5135

COLUMNS ARE ANTI-CORRODED BY HOT-DIP GALVANIZED COMPLIANCE TO GALVANIZING STANDARD BS 729

SERVICE DOOR DIMENSION ARE GIVEN AS A GUIDE ONLY. THE ENGINEER MUST SATISFY HIMSELF THAT DIMENSION IS ADEQUATE FOR THE INSTALLATION THE REQUIRED CONTROL

FINISHING : POWDER COATED STANDARD RAL COLOUR AVAILABLE

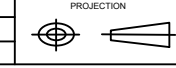
SB SBC LIGHTING SDN BHD.
TEL : 03-32903175 / 76
FAX : 03-32903173
EMAIL : siang@speedybest.com

Title DWG :
**8M ~ 12M Octagonal Pole C/W
SBC VLSL-002 All in One Solar**

REV	DATE	DESCRIPTION	BY	CHECK	APPR

Client :
Project :

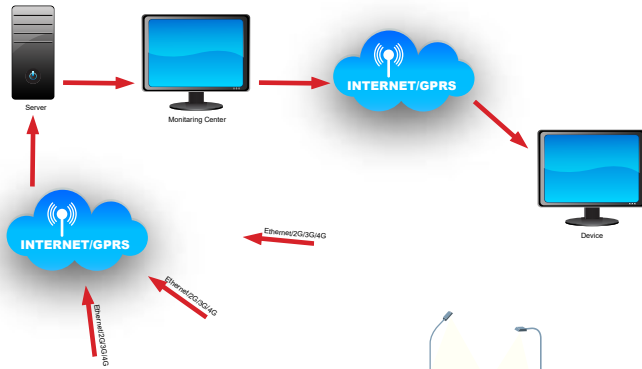
QUANTITY : N/A
SCALE : N.TS
DRAWN BY :
CHECK BY : SIANG



THIS DRAWING IS THE PROPERTY OF
SBC SDN BHD

SMART SYSTEM

RF Solution

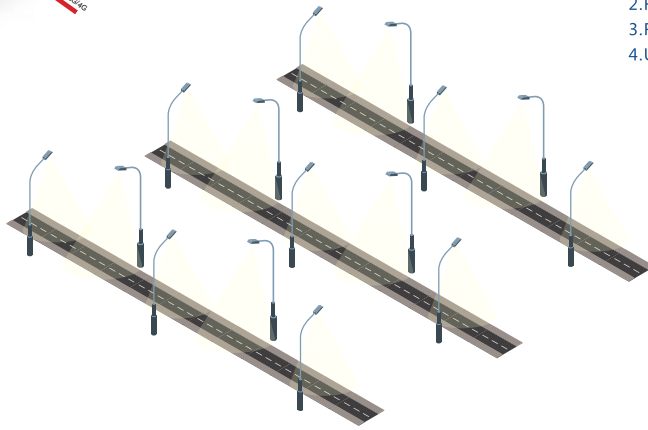


Application :

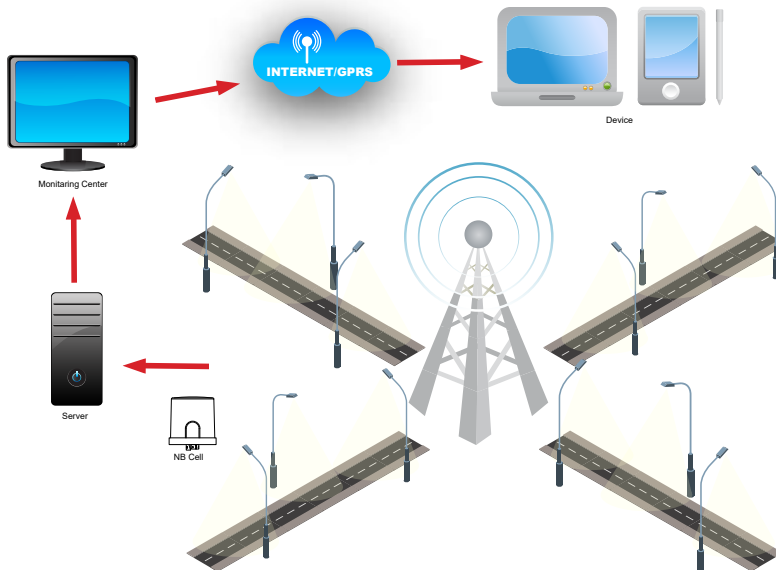
- 1.City road light smart control
- 2.Industrial park , factory and indoor lighting control
- 3.Tunnel lighting and solar lighting control

Features:

- 1.Easy installation
- 2.Flexible system
- 3.Remote monitoring and control
- 4.Utility-grade energy measurement and GPS mapping of lights



NB-IoT / GPRS / GSM



Application :

- 1.City road lighting smart control
- 2.Solar light smart control
- 3.Parking a lot smart lighting control

Features:

Installation simply, low power consumption, low cost, big coverage, large capacity, high stable

SMART SYSTEM

RF Solution Features

1. Smart remote control mode: Longitude and latitude, photocell, timer control and longitude , latitude and photocell combined control mode.
2. Multiple failure detection: lamp on/ off, outage/power on alarms, creepage, over-voltage, over-current, undervoltage, AC contactor and circuit breaker abnormal, power cabinet tilted, door open unexpected, water in cabinet alarms, etc.
3. Built-in Global functions meter, Utility Grade Measurement up to 0.5%. Accuracy, active and reactive power, current leakage and power factor detection, energy consumption reporting.
4. Support smart meter reading by remotely.
5. Upgrading locally/remotely: USB disk/Ethernet, GPRS.
6. Uplink communication GSM Downlink communication: RF mesh network.
7. Utility battery charging and discharging, 8 hours operation back source .

Data Concentrator



Parameter

Operating Voltage: 100-500VAC
 Working Frequency: 47-63HZ
 Power Consumption: 5W
 Ingress Protection: IP54
 Interfaces: DO*4, DI(AC)*2, DI(AC)*6, RS485*1
 Working Temperature: -40°C ~ +85°C
 Relative Humidity: <95%
 Dimension: 288mm*177mm*95mm

Wireless Gateway



Model Selection:

Downlink Communications

ZigBee

Model

MODEL: PEAK-RTU500Z(M)

RF Nodes

1. Self-forming & Self-restoring mesh network.
2. 96-264VAC Input, (96-400VAC optional).
3. With current, voltage, power, power factor, electric energy remote reading functions.
4. Remote switch on/off/dimming.
5. Lighting time statistics, fault time statistics, energy accumulation remote reading.
6. Multiple fault detection and alarms: Lamp failure, compensation capacitor failure, fuse failure, power failure, pole leakage, node lost, relay fault, lamp current leakage, over-voltage, over-current , node high temperature, lamp life, overhaul door open, pole tilt and other active alarm functions. (optional for some functions).
7. 0-10V/PWM/DALI dimming mode.
8. Full autonomous photocell functionality (No wireless network required) (optional).
9. Integrated GPS in each node for Real time Asset Reporting (optional).
10. Integrated pole tilted sensor (optional).

LCU12Z, LCU12M



Dimension:
125mm*60mm*45mm

LCU16Z, LCU16M



Dimension:
Φ84MM*97MM

Parameters:

Working Temperature: -40°C ~ +85°C
 Ingress Protection: IP67
 Communication Mode: Radio Frequency
 Operating Frequency: 2.4GHz/915/868MHz
 Network Communication: IEEE 802.15.4

SMART SYSTEM

NB-IoT / GPRS / GSM Features

- CSA051 Alliance Standard
- NEMA Interface
- Plug and Play, Connection and Communication

1. Big coverage, 20dB gain

- Increase the density of narrow band power
Resending times: 16 times
Encode gain

2. Low power consumption, 10 years lifetime of battery

- Simplify protocol, low chip power
High efficiency of power amplifier
Short time of transmitting and receiving

3. Large connection, 50000 connection for every community

- High efficiency of radio spectrum
- Data package is small
- Ultimate low ratio of terminal activation

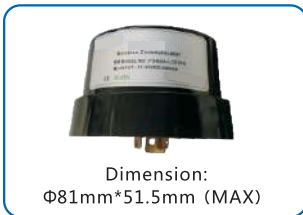
4. Low cost

- Simplify hardware of radio
- Simplify protocol to reduce cost
- Reduce the complication of base band

Technical Features Determine Application Scene

1. Low data flow
2. Bad signal area
3. Large density of installation
4. Power input not convenient
5. Time delay is not sensitive

LCU31G



LCU51L TE



Features:

1. DC input: 12~24V DC / 120mA.
2. Be available to use Micro SIM card or internal chip SIM card.
3. With communication interface to connect with digital driver to realize remote control.
4. Capable of reading current / voltage / power / power factor / electronic energy by remote.
5. With function of detecting lamp failure.
6. With function of making it alarm automatically.

CERTIFICATE

CERTIFICATE

SIRIM QAS International Sdn. Bhd. (Company No.: 1900107092) (910304-K)
 No. 1, Persiaran Datar Menara, P.O. Box 3036, Section 5,
 47000 Sungai Alam, Selangor Darul Ehsan, Malaysia
 Tel. no. +603-6546623 / 6546621 Fax. no. +603-6546622
 www.sirim-qas.com.my

TEST REPORT

REPORT NO.: 2021EAD460 PAGE: 1 OF 18

This Test Report refers only to samples submitted by the applicant to SIRIM QAS International Sdn. Bhd. and issued by SIRIM QAS International Sdn. Bhd. This Test Report shall not be reproduced, except in full and shall not be used for any purpose by any means or forms including but not limited to advertising purposes without written approval from the head of Quality, Occupational Safety and Health & Environment (COSEHS), SIRIM QAS International Sdn. Bhd. Please refer to the last page of this Test Report for Conditions Relating to the Use of Test Report.

THIS TEST REPORT IS ISSUED IN SECURED PDF SOFTCOPY

Applicant: SBC LIGHTING SDN BHD
 NO. 15, JALAN SKI 4/KU7
 KAWASAN INDUSTRI HI-TECH, SUNGAI KAPAR INDAH,
 42200 KAPAR,
 SELANGOR, MALAYSIA.

Manufacturer: SAME AS ABOVE

Product: SOLAR LED STREET LIGHT

Reference Standard / Method of test: IEC 60529 (Edition 2-2): 2013
 (Clause 14.2.5 and 19)
 Degree of protection provided by enclosures (IP Code)

Description of sample: Brand : SBC
 Model : VSL-002
 Overall Dimension : Height : 170 mm
 Width : 565 mm
 Length : 2020 mm
 IP Rating : IP X5D

Date received of complete application: 14 JANUARY 2021

Job no. / Ref. no.: J20201421349

Overall test results: COMPLIED (See page 2 for details)

Issued date: 09 APRIL 2021

Approved Signatories:

(Signature)
 (EFFAHAKAL BIN MD. MAHMUD) Testing Executive

(Signature)
 (M. ZAMRI BIN MUSTAFFA) Head
 Electrical & Electronic Section 1
 Testing Services Department

SIRIM QAS INTERNATIONAL

No Lesen : PC004582
 Licence No. :

LESEN PENSIJILAN BARANGAN
Product Certification Licence

SIRIM QAS International Sdn. Bhd. dengan ini menganugerahkan kepada SIRIM QAS International Sdn. Bhd. hereby grants to

SBC LIGHTING SDN. BHD.
 NO. 39, JALAN 5
 CENTREL INDUSTRIAL PARK
 BATU 5, JALAN KAPAR
 41400 KLANG
 SELANGOR, MALAYSIA

Lesen untuk menggunakan Tanda Pensijilan di atas barangan a licence to use the Certification Mark on
LED LUMINAIRE FOR ROAD AND STREET LIGHTING

Please refer to detail in the SCHEDULE

sebagai mematuhi keperluan as complying with
IEC 60598-1 : 2014
IEC 60598-2-3 : 2011

(Signature)
Mohd Azamuddin bin Salleh
 Ketua Pegawai Eksekutif
 Chief Executive Officer
 SIRIM QAS International Sdn. Bhd.

Tarikh Mula Pensijilan : 06 September 2019
Tarikh Obsoleskan : 12 August 2029

Central Slice
Issue Date : 06 September 2021
No Siri : 067072
Seri/No :

Lesen ini dianugerahkan terutamanya kepada syarikat-syarikat Penerima Pensijilan Barangan SIRIM QAS International Sdn. Bhd.
 This Licence is granted subject to the provisions of the Product Certification Agreement of SIRIM QAS International Sdn. Bhd.

GCL INTERNATIONAL

Certificate of Registration

This is to certify that the
QUALITY MANAGEMENT SYSTEM
 of
SBC LIGHTING SDN BHD & SPEEDY BEST SDN BHD
 No. 39, Jalan 5, Central Industrial Park, Batu 5, Jalan Kapar, Klang, Selangor, 41400, MALAYSIA
 for
Manufacturing and Supply of Street and Road Lightings
 has been assessed and registered against the provisions of
ISO 9001:2015
 International Standard

with

Registration Number: 43020326 Cycle Start Date: 31 August 2019
 Product: 2-2020-1-Q Approval Date: 31 August 2019
 Issue Date: 31 August 2019
 Certification Approved By: *(Signature)* Garry Jones
 Chief Executive Officer Expiry Date: 31 August 2022

GCL INTERNATIONAL LTD
 Level 1, Devern House, One Abchurch Lane, London, W1J 8AJ, United Kingdom.
 SIN: 80012138
 PIN: 69572723

SIRIM QAS INTERNATIONAL

No Lesen : PC00002
 Licence No. :

LESEN PENSIJILAN BARANGAN
Product Certification Licence

SIRIM QAS International Sdn. Bhd. dengan ini menganugerahkan kepada SIRIM QAS International Sdn. Bhd. hereby grants to

PERFECT POLE SDN BHD
 BLOCK C, LOT 5992, JALAN BERULING 09
 KAWASAN 5, TAMAN KLANG JAYA
 41200 KLANG
 SELANGOR MALAYSIA

Lesen untuk menggunakan Tanda Pensijilan di atas barangan a licence to use the Certification Mark on
STEEL LIGHTING COLUMN

Please refer to detail in the SCHEDULE

sebagai mematuhi keperluan as complying with
BS EN 40-1 : 2002

(Signature)
Khalidah Mustafa
 Pengarah Usahay
 Managing Director
 SIRIM QAS International Sdn. Bhd.

Tarikh Mula Pensijilan : 08 July 2019
Tarikh Obsoleskan : 08 July 2029

Central Slice
Issue Date : 28 July 2021
No Siri : 002004
Seri/No :

Lesen ini dianugerahkan terutamanya kepada syarikat-syarikat Penerima Pensijilan Barangan SIRIM QAS International Sdn. Bhd.
 This Licence is granted subject to the provisions of the Product Certification Agreement of SIRIM QAS International Sdn. Bhd.

"VOLUX SOLAR LED LIGHTS FOR A GREENER WORLD"

No.15 Jalan SKI 4/KU7, Kawasan Industri Hi Tech, Sungai Kapar Indah,42200 Kapar, Selangor Darul Ehsan, Malaysia.

Tel : +603-3290 3175 // +603-3290 4092

Email : siang@speedybest.com; puncaksh@hotmail.com

Website www.sb-lighting.com

SOLAR PROJECT REFFERENCES



30w Solar LED
Masjid Wilayah KL, JKR KL



60w Solar LED
Petronas Plant, Terrenanu



60w Solar LED
Peng. Hulu, Perak, JKR KL



30w Solar LED
Kuala Kangsar, Sunway Dev.



80w All in One
Silverlake Perak, Silverland Dev.



60w All in One
Hospital S. Perai, H. Seberang Perai

SOLAR PROJECT REFFERENCES



60w All in One
Logi Air, Jbt Air Selangor



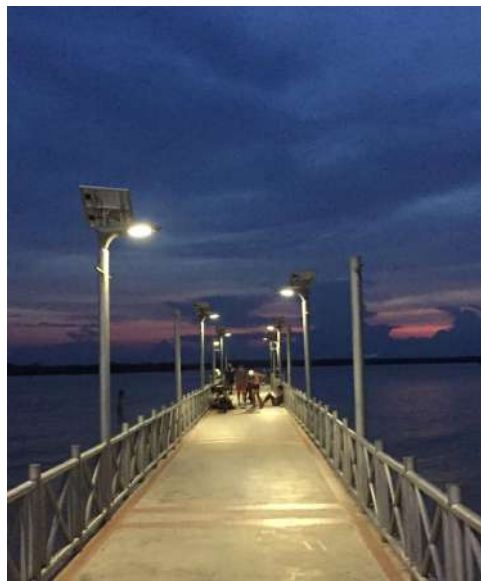
80w All in One
Tsu Chi HQ KL



120w Solar LED
Lebuh AMJ, JKR Melaka



120w Solar LED
Jalan Kapar, Klang, JKR Selangor



120w Solar LED
Melaka Village, MBMB

SOLAR PROJECT REFFERENCES



All in One
TNB Station Kapar, Selangor



All in One
Kawasan Perindustrian Ringan Seremban



All in One
JKR Kuala Selangor



All in One
JKR Pulau Indah

SOLAR PROJECT REFFERENCES



**All in One
Garden Solar Klang**



**All in One
Majlis Perbandaran Klang**



**All in One
Tanjung Harapan Klang**



**All in One
Majlis Perbandaran Batu Pahat**

SOLAR PROJECT REFFERENCES



**All in One
Jkr Selangor Quarters**



**All in One
Playground Majlis Bandaraya Subang Jaya**

SOLAR PROJECT REFFERENCES



All in One
Majlis Daerah Jelebu



All in One
Majlis Daerah Kuala Pilah